

Special Thanks to

Loudoun County Public Schools Music Department  
Michael E. Pierson, Music Supervisor

**John Champe High School**  
John Gabriel, Principal  
Jonathan Philip, Band Director

**Park View High School**  
Kirk Dolson, Principal  
Brian Morton, Band Director

**Potomac Falls High School**  
Dr. Elizabeth Noto, Principal  
Timothy Niebergall, Band Director

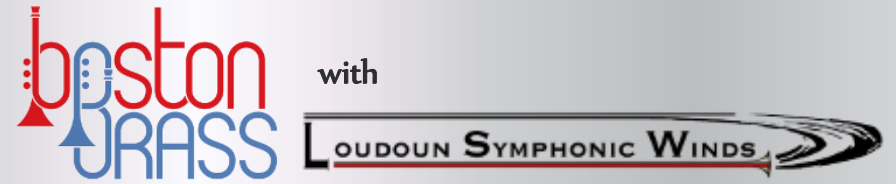
**Washington Dulles Airport Marriott**

**Loudoun Community Band  
Board of Directors**  
Rick Denney, President  
Anne Hennessey, Public Relations Manager  
Debbie Herbert, Treasurer  
Angelika Kirchmeyer, Graphic Artist & Web Designer  
Debbie Overson, Librarian  
Brad Prentice, Fundraising Specialist  
Terri Smith, Stakeholder Manager  
Jim Zirkle, Stage Manager

Visit us at [www.lcbandinc.org](http://www.lcbandinc.org)

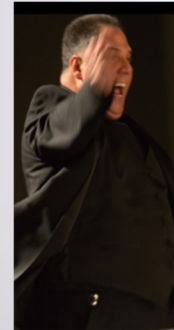


Loudoun Community Band:  
Bringing the Service of Music to Loudoun County



Saturday, June 5  
7:30 p.m.

John Champe  
High School  
41535 Sacred  
Mountain Street  
Aldie, VA 20105



**Dr. Gilbert Corella**  
Music Director

## LOUDOUN COUNTY PUBLIC SCHOOLS

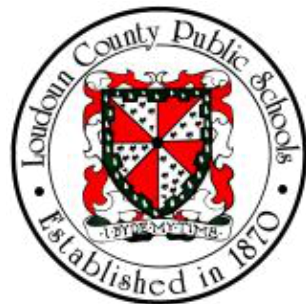
We're excited to partner with the Loudoun Community Band. In cooperation with the Boston Brass, we presented a free educational outreach event to nearly 1,000 students on Friday morning June 3.

These world class musicians interacted with our students, inspiring and motivating them to continue the hard work and commitment to excellence it takes to be great musicians.

As a National Association of Music Merchants Best Community for Music Education, we recognize and value the mutual benefit of working and collaborating with community arts organizations. Creating opportunities like this sustains and builds music programs of the highest quality. We thank the Loudoun Community Band for enriching the lives of our students.

Loudoun County Public Schools  
Music Department

Michael E. Pierson, Music Supervisor



**MUSIC  
& ARTS**

WE'RE PROUD TO SUPPORT:  
**LOUDOUN WIND SYMPHONY**



**10% OFF**

SHEET MUSIC & SONGBOOK PURCHASES

**MUSIC & ARTS**



\*Expires 6/30/16. This offer does not apply to rental payments, lessons, taxes, shipping and handling charges or any similar processing charges. Coupon valid in stores and in-stock product only. This coupon is non-transferable. No cash value. Not valid with other discounts, prior purchases, clearance, sale, or discontinued items. Coupon may not be applied toward institutional/educator purchase. Some exclusions apply, visit MusicArts.com/Exclusions for full list. One coupon per customer per visit. No minimum purchase required. Maximum discount 10% off Sheet Music and Songbook purchases, available in-stock and in-store Only. Music & Arts reserves the right to alter or cancel this promotion at any time without notice.

INSTRUMENTS | LESSONS | RENTALS | REPAIRS

MusicArts.com



## Loudoun Symphonic Winds

Loudoun Symphonic Winds is a community-based concert band that has become one of the area's most exciting musical ensembles since its formation in 1993.

We're professional and dedicated amateur musicians whose goal is to give the Loudoun community and its neighbors an opportunity hear the best of yesterday's and today's concert band music. LSW exists under the umbrella organization Loudoun Community Band, Inc., a non-profit organization in the public interest and a member of the Association of Concert Bands. We promote musical participation, education, appreciation and enjoyment for the community.

If you visit our website you can sign up for our newsletter and receive concert invitations! You'll also find links to our Facebook page, YouTube channel and Twitter.

~ Visit [www.lcbandinc.org](http://www.lcbandinc.org) ~



## PROGRAM

WASHINGTON GRAYS .....	C. S. Grafulla
CANDIDE OVERTURE .....	Leonard Bernstein arr. Clare Grundman
LOVE SCENE .....	Giacomo Puccini arr. Merlin Patterson
DANSE BACCHANALE .....	Camille Saint-Saëns arr. Leigh Steiger
DANZA FANTASTICA .....	Joaquin Turina arr. Chris Castellanos
PRELUDE AND FANTASY .....	Rick DeJonge
CINEMATIC FANTASY .....	Rick DeJonge

~ INTERMISSION ~

LA BIKINA .....	José Sibaja
FOOTLIFTER .....	Henry Fillmore
SUN DANCE .....	Frank Ticheli
MARCHE SLAVE .....	Pyotr Tchaikowsky arr. L. P. Laurendeau
GREEN HORNET.....	Billy May arr. Chris Castellanos
SWAY .....	Pablo Beltran Ruiz arr. Sam Pilafian
SUMMERTIME .....	George Gershwin arr. Chris Castellanos
HEROES AND LEGENDS .....	Barry E. Kopetz

---

## BOSTON BRASS

JOSÉ SIBAJA, trumpet / JEFF CONNER, trumpet  
CHRIS CASTELLANOS, French horn  
DOMINGO PAGLIUCA, trombone  
SAM PILAFIAN, tuba

For nearly 30 years, Boston Brass has set out to establish a one-of-a-kind musical experience. From exciting classical arrangements, to burning jazz standards, and the best of the original brass quintet repertoire, Boston Brass treats audiences to a unique brand of entertainment, which captivates all ages. The ensemble's signature sound, lively repartee, touched with humor and personality, attempts to bridge the ocean of classical formality to delight audiences in an evening of great music and boisterous fun. The philosophy of Boston Brass is to provide audiences with a wide selection of musical styles in unique arrangements, provided in a friendly and fun atmosphere.



Through over 100 performances each year, the members of Boston Brass play to audiences at concerts, educational venues and jazz festivals. In addition to solo performances, Boston Brass regularly performs with orchestras, bands, organ, jazz bands and a variety of other ensembles.

---

## THANKS TO OUR SPONSORS

~ Encore ~

- ◆ Pamphalon Foundation

~ Standing Ovation ~

- ◆ Loudoun County Public Schools Music Department
- ◆ Music & Arts
- ◆ Scitor Corporation
- ◆ Wells Fargo

~ Fortissimo ~

- ◆ Bach to Rock
- ◆ Jordan Kitt's Music
- ◆ Loudoun Commercial Title, L.L.C.
- ◆ Shenandoah Conservatory

~ Allegro ~

- ◆ Foxes Music
- ◆ O'Faolain's Irish Restaurant & Bar
- ◆ Quappa Inc.
- ◆ In Memory of Dorothy Roberts

~ THANKS TO BOSTON BRASS ~



## HELP US GIVE THE GIFT OF MUSIC: BECOME A SPONSOR TODAY!

Loudoun Community Band, Inc. offers sincere thanks to all our musicians, volunteers, board members, members of the audience, and sponsors for their support.

Become a sponsor today! Here are the benefits:

- ◆ Since we are a 501(c)(3) organization, your contribution is tax deductible.
- ◆ Your name (or organization) is listed on our concert programs for one season.
- ◆ You will receive complimentary tickets to our events.

Your contribution will support our mission of bringing satisfying musical experience to audiences, many of whom are normally unable to attend musical performances by large ensembles such as ours. Our mission also includes educational outreach events that bring local area students into contact with adult performers, including world-class ensembles such as the Boston Brass.

Below are our current sponsorship options:

- ◆ Encore: \$5,000 and higher
- ◆ Standing Ovation: \$1,000 - \$4,999
- ◆ Maestro: \$600-\$999
- ◆ Fortissimo: \$400-\$599
- ◆ Allegro: up to \$399

They have performed in 49 states and 30 countries and have conducted master classes around the world including sessions and residencies at the Eastman School of Music, The Juilliard School, Shepherd School of Music at Rice University, Peabody Conservatory of Music, University of North Texas, Sibelius Academy of Music in Helsinki, Royal Northern College of Music, Royal Academy of Music in London, Yong Siew Toh Conservatory at the National University of Singapore and Mahidol University in Bangkok.







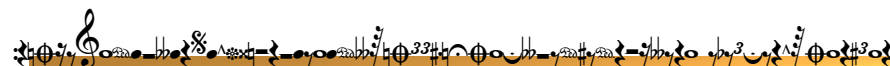
Boston Brass along with Jupiter Band Instruments are ambassadors for the Give A Note Foundation, giving musical instruments to schools in need. They have been featured educators and performers at the Mid West Band and

Orchestra Clinic, World Association for Symphonic Bands and Ensembles, Music Educators National Conference events, American Bandmaster Association Conference, The American Band College, Western International Band Clinic and at the Texas Bandmasters Association Convention. Since 2006, Boston Brass has served as Artist/Educational Ambassadors for KHS America, XO Professional Brass Instruments.

Boston Brass appears by arrangement with Middleton Arts Management, [www.middletonartsmanagement.com](http://www.middletonartsmanagement.com)

~ Visit [www.bostonbrass.com](http://www.bostonbrass.com) ~

 [www.youtube.com/user/bostonbrass](http://www.youtube.com/user/bostonbrass)  
 [twitter.com/bostonbrass](http://twitter.com/bostonbrass)  
 [www.facebook.com/bostonbrass](http://www.facebook.com/bostonbrass)  
 [bostonbrass.tumblr.com](http://bostonbrass.tumblr.com)



## DR. GILBERT CORELLA, MUSIC DIRECTOR

Dr. Corella began his musical career with the United States Air Force Band in 1985. He participated in ceremonies ranging from State arrivals at the White House to full honors funerals at Arlington National Cemetery and represented the Air Force as a soloist and clinician at conferences worldwide.



He later moved into administration to become the director of the Air Force Band's Chamber Series program and eventually joined the public affairs team. He built partnerships with civilian and other military organizations to promote the Air Force's public image. He managed radio and television productions as well as represented the Air Force at international music education conferences. After serving 25 years, he retired as the Director of Special Events.

As a civilian, Dr. Corella developed an instrumental ensemble program at Charles County Community College (today College of Southern Maryland). He also recorded on several compact discs, including *The Bear* (Unnatural Ax); *Side by Side*, *A Klezmer Service*, *National Taptoe*, and *Tower Music*. In 2003, he founded the Serapis Foundation, whose mission is to educate and stimulate awareness on the diversity of musical expression with a focus on diverse and economically challenged children.

His degrees include a Bachelor of Arts from the Catholic University of America; a Masters of Arts in conducting and performance from George Mason University; and a Doctorate of Musical Arts from the Catholic University of America - as the first-ever graduate in tuba performance. He has been teaching tuba and euphonium at George Washington University and directing the Loudoun Symphonic Winds since 1999.

## MUSICIANS

<b>Piccolo</b> Cheryl Romano	<b>Bass Clarinet</b> Jodi Grande Debbie Overson Andrew Schlaf	Angelika Kirchmeyer Pamela Mesite Cathy Olivieri-Moss Sarah Overson
<b>Flute</b> Jamilah Anderson Michelle Francis Anne Hennessey Courtney McCartney Bryan Mejia-Medina Muriel Nanninga Margo Kujat Michelle Rubis Linda Thurston	<b>Alto Sax</b> Jennifer Nadel Brad Prentice Charles Taylor	<b>Trombone</b> Scott Dickinson Ed Fleming Charise Rodriguez Jim Walker
<b>Oboe</b> Christine Richard Jenni Campbell	<b>Tenor Sax</b> William Smith	<b>Bass Trombone</b> Jerome Auman Chuck Schmidt
<b>Bassoon</b> Donna LaRoss	<b>Trumpet</b> Mark Davis John Friedman Eric Miller Ken Lee Brad Mejia-Medina Richard Moreno Jim Overson Karla Prentice Eric Showalter Les Williams Jim Zirkle	<b>Euphonium</b> Alison Leonhardt Mike Overson
<b>Clarinet</b> Keith Blinn Jill Burcham Allyson Capurso Debbie Herbert Alexa Simmons Terri Smith Colin Taylor Bill Thomas Brent Washburn	<b>Tuba</b> Rick Denney Adam Nadel Kent Wellman	<b>Percussion</b> Caleb DeGroot Kerry Jones Brian King Valeri Taylor Nathan Whitaker Sierra Woollard
	<b>Horn</b> David Alexander Justin Boggess Erik Kabo Cory Katona	

